

QUICK START BOOK

DREMEL®
BIG ON DETAIL

CONTENTS

GETTING STARTED WITH DREMEL	3
MULTITOOL SYSTEM	4
MULTITOOL INFORMATION	5
MULTITOOL DIAGRAM	8
MULTITOOL ACCESSORIES	10
MULTITOOL ACCESSORIES INDEX	18
MULTITOOL ACCESSORY SETS	20
MULTITOOL ATTACHMENTS	21
OTHER TOOLS	26
HINTS AND TIPS	30
HOBBY LINE	33
PROJECTS	35
PROJECTS - OUTDOOR	36
PROJECTS - INDOOR	38
PROJECTS - CRAFTS & GIFTS	42
INDEX BY NUMBERS	46

GETTING STARTED WITH DREMEL®

The Dremel® Quick Start Book has been written to help you become familiar with the Dremel System of tools, accessories and attachments.

The Quick Start Book will show you how to start using the tool in the right way by providing helpful information on the items typically packed with the tool.

Next to that we will show inspiring projects. Beginners and experts alike will appreciate the "Projects section" which gives detailed instruction on projects that you can do with your Dremel. It includes indoor, outdoor and creative projects and will show how to improve and maintain your home and garden, as well as gift and craft projects.

Go ahead and read this book. You will discover the world of Dremel: there is truly no limit to the amount of projects you can do with Dremel products.



MULTITOOL SYSTEM

As the inventor of one of the most valued tools in the world, Dremel has worked hard to increase the value of its tool by making attachments and accessories that will easily adjust and vary its function. The Dremel high speed multitool is an entire system of functional options that centre around a core tool. This system makes the tool multi-functional, versatile and easy to use.

Dremel accessories are colour coded into usage categories to make it easier for consumers and store personnel to select their application. The Dremel multitool system consist of the following products:

A

Tool

Dremel multitool combined with the right accessory allows you to reach the perfect result in all applications. Its variable high speed make possible to carve, engrave, rout, sharp, grind, clean, polish, cut and sand all kind of materials.

B

Accessories

Dremel offers you a wide variety of high quality accessories for different applications. They are colour-coded and can be easily selected for the right application.

C

Attachments

The Dremel line has many different attachments which makes your Dremel multitool more versatile.



MULTITOOL INFORMATION

A

CORDED



DREMEL 200I



DREMEL 4000



DREMEL 3000



DREMEL 4200

CORDLESS



DREMEL 7700



DREMEL 8100



DREMEL 8200

MULTITOOL INFORMATION

Dremel has created a number of high speed multitools, corded as well as cordless. Every tool has specific features that makes it unique in its class. Dremel has developed each tool to meet the highest quality standards and optimize your enjoyment and comfort while working.

A

Dremel® 200 series

- Two-speed settings: 15.000 + 35.000 1/min
- 125W rated power
- Voltage: 230-240V
- Weight: 0,55 kg
- Hanger bail

Dremel 200 series: easy and comfortable, the ideal multitool the get started with Dremel.



DREMEL 200i

Dremel® 3000

- Variable speed - 10.000 - 33.000 RPM
- 130W
- Collet lock
- Innovative EZ Twist Nose Cap
- Integrated hang hook
- Soft grip

Dremel 3000: great quality at an affordable price.



DREMEL 3000

Dremel® 4000

- Variable speed 5.000 to 35.000 rpm
- 175W High Motor power
- Full variable speed control for maximum precision
- Separate on/off switch with integrated collet lock out function
- 2 different nose caps with soft grip

Dremel 4000: Maximum all-round performance.



DREMEL 4000

Dremel® 4200

- EZ Change: easy pull levers for the fastest, keyless accessory change
- 175W motor for high performance
- Electronic feedback for enhanced torque and performance
- Full variable speed control (5.000 - 33.000 RPM) for maximum precision
- Soft grip in all gripping areas for excellent handling
- Separate on/off switch for easy handling

Dremel 4200: top technology and maximum performance.



DREMEL 4200

MULTITOOL INFORMATION

A

Dremel® 7700

- Dual speed: 10.000 + 20.000 1/min
- Cordless 7.2V Ni-Cad
- Compact and lightweight design
- Exchangeable battery

Dremel 7700: easy to use anywhere and with all kind of materials.



DREMEL 7700

Dremel® 8100

- 7.2 Volt variable speed 5.000 to 30.000 RPM
- Innovative EZ Twist Nose cap
- Soft grip for reduced vibration
- Fast charging with 1-hour charger

Dremel 8100: the most comfortable and easy to use cordless multitool.



DREMEL 8100

Dremel® 8200

- 10.8 Volt variable speed 5.000-30.000 rpm
- 1,5Ah, 16.2Wh motor power
- Soft grip in all gripping areas
- Separate on/off switch with collet lock out function
- Exchangeable battery

Dremel 8200: most powerful cordless multitool.



DREMEL 8200



MULTITOOL DIAGRAM

1. Accessory Shank

The part of the Dremel accessory that is inserted into the tool. Most of the Dremel accessory shank sizes are 3.2 mm. Other sizes include 2.4 mm, 1.6 mm and 0.8 mm.

2. Collet nut

Tightening the collet nut forces the collet's fingers inward, securing accessories for use. Avoid excessive tightening.

3. Collet

The most precise way to hold an accessory in a high speed multitool. Even at high speeds and maximum pressure, collets stay tight. The collet is located underneath the collet nut inside the tool's shaft.

4. MultiChuck

Allows users to change accessories without the use of any collet in the tool. Works with the Dremel Corded and Cordless high speed multitools, and all attachments except the router, cutting guide, grout removal, chainsaw sharpening and lawnmower sharpening attachments.

5. Shaft

The rotating part of the Dremel multitool where the collet is inserted. The shaft is threaded for attaching the collet nut or the MultiChuck.

A



Attaching an accessory to the tool using the collet and collet nut

1. Your tool comes with an 3.2 mm collet and collet nut.
2. Now determine the accessory shank size.
3. Select a collet to fit the shank diameter of the accessory.
4. Depress shaft lock button.
5. Loosen and remove collet nut.
6. Insert properly sized collet.
7. Replace but do not tighten collet nut.
8. Insert shank of accessory.
9. Tighten collet nut.

MULTITOOL DIAGRAM

8. Wrench

Used to loosen and tighten the collet nut. Also works as a screwdriver for the #402 mandrel.



A

7. Shaft lock button

Keeps the shaft from rotating which aids in the loosening or removal of the collet nut or MultiChuck.

6. Housing cap

Unscrews from the multitool to expose threads for mounting Dremel attachments.

11. Bail

A wire loop for hanging the tool.



10. Air Vents

Proper airflow is required to keep the motor running cool. When using the tool, do not block the air vents.

9. On/off switch and Speed Control

Turns the tool on and off and allows for selection of the rotation speed. Some tools have a separate on/off switch.

Accessory change by use of the wrench

Dremel 200 – series
Dremel 7700

EZ Twist nose cap,
no wrench needed

Dremel 8200
Dremel 4000
Dremel 8100
Dremel 3000
New EZ Twist

Attaching an accessory to the tool using the MultiChuck

1. Your tool comes with an 3.2 mm collet and collet nut.
2. Depress shaft lock button.
3. Loosen and remove collet and collet nut from your tool.
4. Begin to thread the MultiChuck onto the tool shaft while keeping shaft lock button depressed.
5. As the jaws begin to close, insert the shank of the accessory into the chuck.

Dremel EZ Change

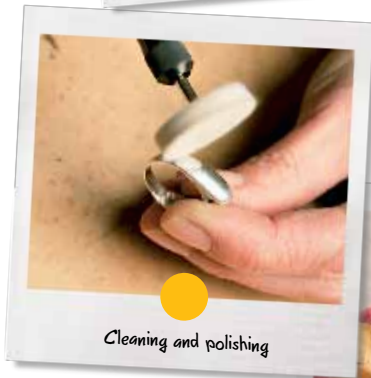
Exclusively new to the Dremel 4200, Dremel presents EZ Change. To change accessories simply pull down the lever at each side, place in an accessory then release! No need for a wrench or lock button and no twising!



MULTITOOL ACCESSORIES

To optimise your project result, you need the right accessories with a high quality standard. Dremel has developed a range of accessories to suit all your needs. To help you select the right accessories, Dremel has created a colour-coding system: every colour represents a category of application. This will help you to select the right accessories for your jobs. No matter which materials you want to work with, Dremel has a solution for you.

B



Carving / Engraving / Routing

Grinding / Sharpening

Cleaning / Polishing

Cutting

Sanding

Collets / Mandrels / Miscellaneous

MULTITOOL ACCESSORIES

Dremel, the inventor of the Multitool, now brings you Dremel EZ SpeedClic. An innovation that makes changing accessories quick and easy. Through a patented and wheel design, Dremel has found a way that enables you to change your accessory in 3 simple steps – Pull, Click, Twist – without using any tools.

DREMEL EZ
SpeedClic



Overview of the full range of EZ SpeedClic accessories:

<p>● SC541</p>	<p>● 423S</p>	<p>● SC406/SC456/ SC456B</p>	<p>● SC409</p>
<p>● SC476</p>	<p>● SC544</p>	<p>● SC545</p>	<p>● 511S</p>
<p>● 512S</p>	<p>● 471S</p>	<p>● SC411</p>	<p>● SC407</p>
<p>● 472S</p>	<p>● 473S</p>	<p>● SC413</p>	

MULTITOOL ACCESSORIES

Carving and engraving bits Carving and engraving bits are the largest category of Dremel accessories. Their overall sharpness and durability allow them to last a long time when used properly.

Router bits are used for edging and grooving wood, and making things like letter signs and picture frames. Should be always used with plunge router attachment or sharper/router table.



High Speed Cutters

Can be used for shaping, hollowing, grooving, slotting, and making tapered holes in soft metal, plastics and wood.



Engraving Cutters

Quality cutters for detail engraving, carving, routing in wood, fiberglass, plastic and soft metals. (3.2 mm shank).



Structured tooth tungsten carbide cutters

Fast cutting sharp teeth for greater material removal. Use on fiberglass, wood, plastic, epoxy, rubber, laminates, chipboard, soft metals, and ceramic wall tiles.



Diamond wheel points

For fine detail work, engraving, carving, touch-up and finishing. Use on wood, jade, ceramic, glass, hardened steel, semiprecious stones and other hard materials. Bits are covered with diamond particles. (3.2 mm shank).



Tungsten carbide cutters

Use for shaping, smoothing and material removal. Use on hardened steel, stainless steel, cast iron, non-ferrous metals, fired ceramics, plastics, hardwoods and other hard materials.



Routing



Router Piloted Bits

Designed to work on only the edge of the wood. Can be used to create decorative edges on various wood items.



Straight router bits

Straight bits are flat on the bottom and can be used for routing down the centre or interior of a piece of wood. They can also be used for cutting square grooves and for leveling recessed areas.



Other decorative router bits

Can be used for grooving, carving, lettering and other decorative shapes.



Keyhole Router Bit

Use keyhole router bit for routing mounting slots in wood objects.

MULTITOOL ACCESSORIES

Grinding and Sharpening The accessories in this category have many practical, do-it-yourself applications. They accomplish the everyday, money-saving things like sharpening mower blades, boat propellers and chainsaw blades. They can also deburr, smooth, grind and clean a variety of materials around the home and garden.



Silicon carbide grinding stones

Designed to work well on stone, glass, ceramics, porcelain and non-ferrous metals.



Aluminum oxide grinding stones

Use on metals, castings, welded joints, rivets and rust. Ideal for sharpening, deburring and general purpose grinding of most materials.

DREMEL EZ
SpeedClic



EZ SpeedClic Grinding wheel SC541

The Dremel SC541 Grinding Wheel is ideal for grinding and deburring all sort of metals. The EZ SpeedClic system enables quick and keyless accessory change.



Abrasive points

Great for finishing work and light deburring. They can be used for paint and rust removal without removing any of the base material.



Chainsaw sharpening stones

Precision ground for quick, easy sharpening of chainsaw blades with attachment.



MULTITOOL ACCESSORIES

Cleaning and Polishing Dremel cleaning and polishing accessories include brushes, felt accessories, buffing wheels and rubber points.



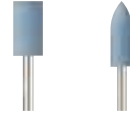
Polishing accessories

Includes an EZ Speedclik cloth buffing wheel and felt polishing points and wheels. Use with mandrels #401, #402 and SC402.



Polishing compound

A hard, solid compound used with the felt or cloth accessories to polish metal and plastics. Polishing compound removes a dull oxidation film and/or light surface imperfections.



Rubber polishing points

For finishing and polishing all ferrous metals (containing iron). Effective on stones and ceramics and on removing small burrs and scratch marks. (3.2 mm shank).



Impregnated Polishing Wheel

Impregnated polishing wheel for light stock removal and high luster polishing. Works on several materials. Polishing compound is not needed.



Stainless steel brushes¹⁾

Will not cause "after-rust" when used on corrosive-resistant materials like pewter, aluminium and stainless steel.



Brass brushes¹⁾

Non-sparking and softer than steel. They won't scratch soft metal like gold and copper.



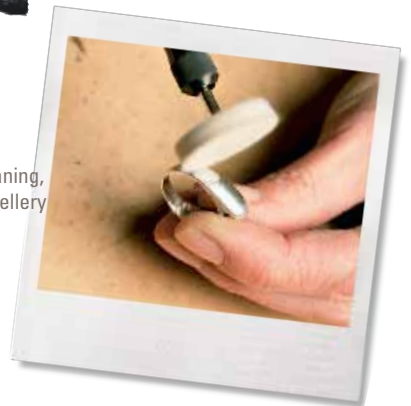
Carbon steel brushes¹⁾

Versatile brush for removing rust and corrosion, polishing metal surfaces.



Bristle brushes¹⁾

Use for light deburring, cleaning, polishing of silverware, jewellery and other precious metals.



¹⁾ Do not run in excess of 15,000 rpm

MULTITOOL ACCESSORIES

Cutting Dremel provides two types of cutting accessories; cutting bits and cut-off wheels.

Cutting bits

Cutting bits are used with the Dremel cutting guide and cut in a manner similar to spiral saw blades in any direction.



Drywall cutting bit¹⁾



Multipurpose cutting bit¹⁾



Tile cutting bit^{1) 2)}



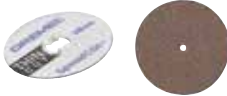
Grout removal bit



Cut-off wheels

Cut Off wheels Make it easy to cut or slot bolts, screws, sheet metal, thin wood and plastic. Fiberglass reinforced cut-off wheels are for tough application. The cut-off wheels cuts only along its edge.

DREMEL EZ
SpeedClic



Cut-off wheels³⁾



Fiberglass reinforced cut-off wheel³⁾



DREMEL EZ
SpeedClic



EZ SpeedClic diamond wheel



Carbide cutting/shaping wheel

For slotting, slicing and shaping on its edge and face. This wheel will work on soft and hard wood, fiberglass, plastics and laminates.



¹⁾ For use with cutting guide attachment / ²⁾ Not for use on floor tiles / ³⁾ Use with #402 mandrel

MULTITOOL ACCESSORIES

Sanding Dremel sanding accessories include sanding drums, bands, discs, flapwheels and abrasive buffs to remove and smooth material.



Sanding bands

For rough shaping, smoothing wood and fiberglass, removing rust from metal surfaces and shaping rubber surfaces. Sanding bands are easily replaceable on the appropriate sized sanding drums.



Sanding discs

For rough shaping, smoothing wood and fiberglass, removing rust from metal surfaces and shaping rubber surfaces. Sanding discs are available in finer grits than the sanding drums and are used for fine detail sanding. Use with the #402 and SC402 mandrels.



Flapwheels

For grinding and polishing flat or contoured surfaces. Flapwheels are used most effectively as a finishing sander after heavier surface sanding and material removal is completed.



DREMEL EZ
SpeedClic

EZ SpeedClic Finishing abrasive buffs

Finishing abrasive buffs medium + course and fine. For precise and delicate material removal on metal, glass, wood and plastic. The flexible material enables to work on tight and irregularly shaped areas.



EZ SpeedClic Detailed Abrasive Brushes

The Detailed Abrasive Brushes have very flexible bristles which allow removal of the exterior "surface layer" without damaging the base layer below. This can be used for deburring, cleaning, finishing of detailed parts, tiny areas and irregular places



MULTITOOL ACCESSORIES

Collets, Mandrels and Miscellaneous The grey category features the miscellaneous extras, like drill bits, collets and mandrels.



MultiChuck

Allows you to quickly and easily change accessories on your Dremel multitools without using collets. The MultiChuck works with all attachments except the router, cutting guide, grout removal chainsaw sharpening and lawnmower sharpening attachment.



Collets

The most precise way to hold an accessory in a high speed multitool. Even at high speeds, under maximum pressure, collets will stay tight.



Collet Nut

Used to tighten the collet, securing accessories for use.



Drill Bit Set

7 bits for drilling into wood and soft metal.



Wood Drill Bit Set

4 drill bits with centering point for drilling into wood. The titanium coating offers high performance and longer lifetime.



Mandrels

Used to mount a variety of different accessories.



Glass Drilling Bits

The Glass Drilling Bits 662 and 663 are ideal to cut holes in glass. With the included cooling fluid you can drill perfect holes with a 3.2mm and 6.4mm diameter.

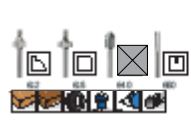


MULTITOOL ACCESSORIES INDEX

Carving / Engraving / Routing

Grinding / Sharpening

Cleaning / Polishing

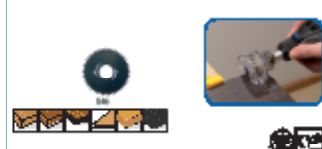
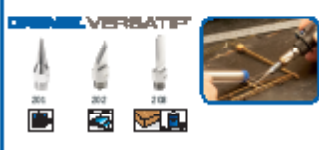
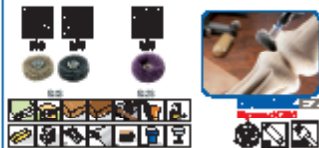


MULTITOOL ACCESSORIES INDEX

Cutting

Sanding

Collets / Mandrels / Miscellaneous



MULTITOOL ACCESSORY SETS

B

100 Pieces



135 Pieces



165 Pieces



Multipurpose Accessory set

These Modular Dremel Accessory Set contains a wide range of the most popular genuine Dremel accessories (including EZ SpeedClic). The accessories are packed in two connectable storage cases (the 100 pieces has 1 case). These modular storage cases can be connected to similar Dremel storage cases, to create and expand your own storage system.

Wood Working Accessory set

This Dremel Wood Working Set contains a special selection of genuine Dremel accessories (including EZ SpeedClic); all you need for all your wood working projects. It also includes two attachments: Shaping Platform (for excellent control when sanding) and Detailer's Grip (for increased control), especially designed with wood working in mind. The accessories and attachments are packed in two unique and connectable modular storage cases. These modular storage cases can be connected to similar Dremel storage cases, to create and expand your own storage system.

Cutting & Grinding Accessory set

This Dremel Cutting & Grinding Set contains the most popular Dremel cutting & grinding accessories (including EZ SpeedClic) and two useful attachments: Line & Circle Cutter and Cutting Guide, perfect for all your cutting & grinding jobs in metal, stone and plastic. The accessories and attachments are packed in two unique and connectable modular storage cases. These modular storage cases can be connected to similar Dremel storage cases, to create and expand your own storage system.



Cleaning/Polishing set (684)

All you need for cleaning and polishing in a convenient box. Removable accessory tray and 3 dividers provide perfect storage solution.

Multipurpose set (687)

Assortment of best selling accessories in a convenient box. Removable accessory tray and 3 dividers provide perfect storage solution.

Cutting set set (688)

Assortment of 68 cut-off wheels in a convenient box. Removable accessory tray and 3 dividers provide perfect storage solution.

EZ SpeedClic Cutting set (SC690)

Assortment of 10 unique, patented EZ SpeedClic cutting wheels and special EZ SpeedClic mandrel. Besides 6 regular 38 mm metal cutting wheels the kit includes 2 special thin cutting wheels (thickness 0.75mm) and 2 unique plastic cutting wheels.

MULTITOOL ATTACHMENTS

With Dremel attachments you can do your job with even more precision and ease. Dremel offers the versatility you need to easily reach the hardest places; find the best position to work and fix any object by setting up a workstation at home.



Right angle attachment (575)

Enhances the versatility of your Dremel multitool by allowing you to get into hard-to-reach areas.

- Smooth and cool operation.
- Coupling system allows you to place the attachment on your tool in 12 different directions.
- Quick connect system easily attaches to your multitool.
- Compact, durable design for those "hard-to-reach" places.



Flex-shaft (225)

Ideal for hard to reach places.

- Comfort grip handpiece allows fingertip control.
- 127 mm bend radius provides more comfort during use.
- Quick connect attaches the multitool in seconds.
- Integrated shaft lock button makes for easy accessory changes.



ATTACHMENTS TO REACH

MULTITOOL ATTACHMENTS



Plunge router attachment (335)

Transforms your multitool into a router for edging, grooving and freehand routing.

- Plastic knobs for easy tool assembly, depth adjustment, and edge and circle guide assemblies.
- Easy guide handles with pop off caps for router bit storage.
- Edge guide allows for accurate straight edge cuts.
- Circle guide routs perfect circles.

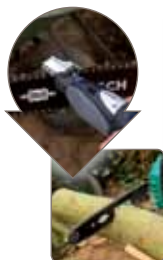


Router table (231):

Converts your multitool into a bench mounted wood shaper.

- Plastic knobs for easy tool assembly and depth adjustment.
- Smooth table surface to slide your work piece easily over the table.
- Large 203.2 mm x 152.4 mm worktable.
- Slot, groove, sand and trim edges.

ATTACHMENTS TO ROUT



Chainsaw sharpening attachment (1453):

Easily sharpen the duller of chains.

- Four sizes of sharpening stones.
- Adjustment gauge.

ATTACHMENTS TO SHARPEN

MULTITOOL ATTACHMENTS



Multipurpose cutting kit (565)

Cutting a variety of materials.

- Easily attaches to multitool.
- Plastic knob for easy cutting depth adjustment.
- Two drywall cutting bits.
- One multipurpose bit for cutting ceiling tile, wood, plastic, fiberglass, drywall, laminate and plastic mouldings.

Wall tile cutting Kit (566)

Includes cutting guide and bit for cutting and shaping ceramic wall tiles. (Not for use on floor tiles)

- Easily attaches to multitool.
- Plastic knob for easy cutting depth adjustment.
- One tile cutting bit for shaping ceramic tile.



Wall & floor grout removal Kit (568)

For use on wall and floor grout.

- Plastic knob for easy slide depth adjustment.
- 30° angle for controlled cutting.
- Guides keep bit centred between tiles.
- Easy screw on mounting.
- Includes 1.6 mm grout removal bit.



Circle cutter (678)

Makes perfect round and straight cuts

- Easily connects to you Dremel tool
- Included cutting bits are perfect for cuts in drywall, wood and laminate
- Maximum cutting diameter is 30 cm



ATTACHMENTS TO CUT

MULTITOOL ATTACHMENTS

Workstation (220)

This is the perfect solution for stationary with your Dremel.

- Drill vertically or in angle, adjustable in increments of 15 degrees.
- Holds tool horizontally for polishing and sanding.
- Integrated, telescoping tools stand holds tool with flex shaft (225).
- On-board accessory storage.
- Cord management keeps cord safely stowed.
- Depth marking for consistent depth adjustment.
- Base markings (Metric and Inches).



Flex-shaft tool Holder (2222)

Conveniently suspends your Dremel multitool above your workbench.

- Perfect for use with flex-shaft.
- Clamps to workbenches up to 50mm thick.
- Adjustable height from 300 to 1070mm.
- Stores extra bits on its base.



Dremel® Detailer's Grip Attachment

The Dremel Detailer's Grip attachment enables you to have even better control of your multitool when doing DIY, hobby and craft projects

- Detailer's Grip Attachment
- Stencil Template
- 107 Engraving Cutter
- 481 Collet 2.4 mm



Dremel® Shaping Platform Attachment

The Dremel Shaping Platform enables you to sand and grind at perfect 90 and 45 degree angles.

- Shaping Platform Attachment
- 407 Sanding Mandrel and Band
- 932 Grinding Stone



ATTACHMENTS TO CONTROL

MULTITOOL ATTACHMENTS



Dremel Multi-Visa (2500)

The Dremel 3 in 1 Multi-Visa. Stationary vise, stand alone clamp & toolholder.

- Clamps to any workbench, table or countertop.
- Rotates 360° and tilts 50°. Allows approaching the workpiece from a comfortable angle.
- Jaws may be used with base unit or detached for use as a stand-alone bar clamp.
- Easily accommodates larger work pieces.
- Stabilize oversize objects and protect delicate pieces from damage.
- Allows round and odd-shaped objects.
- Makes removal of objects from jaws fast.
- Resists twisting and bowing for solid stability.

ATTACHMENTS TO CONTROL



Mini saw (670)

Transforms your Dremel tool into a precision circular saw for fine, clear and straight cuts in all sorts of wood.

- Perfect for laminate and wood flooring or thin wood plates.
- The safety guard and lower guard make it safe to use the circular saw blade.
- The guide allows to make straight cuts.
- Quick connect attaches your Dremel tool in seconds.
- This mini saw attachment is easier to use than a hand saw, more precise than a jig saw and fits in tighter spaces than a circular saw.

ATTACHMENTS TO SAW

OTHER TOOLS

Besides our current line of Multitools, Dremel is always looking for ways to help you during all phases of your projects from beginning till end. That's why we have developed tools beyond the multitool category.

A



Dremel® Moto-Saw

The Dremel Moto-Saw is a compact and easy-to-use scroll saw for making detailed cuts in different materials. With its range of different saw blades, the Dremel Moto-Saw can handle many different materials easily.

Thanks to its detachable fretsaw, it can be used not only stationary but in-hand anywhere. This user-friendly scroll saw is not only easy to store and set-up, but also easy to operate.

The Dremel Moto-Saw is the most user-friendly scroll saw.



DREMEL MOTO-SAW

Dremel® DSM20

The Dremel DSM20 is the ultimate compact saw with an excellent line of sight. With its powerful motor and use of abrasive wheels, this saw can easily perform precise straight, plunge and flush cuts in materials up to 20mm thick. The product comes with a wide variety of non-intimidating abrasive cutting wheels for accurate work in wood, metal, plastics, stoneware and tiles.

The ultimate cutting solution



DREMEL DSM20

OTHER TOOLS

A

Dremel® Multi-Max MM20

Dremel Multi-Max MM20 is an oscillating tool with high performance motor and Quick-Fit accessory mechanism. Equipped with electronic feedback and soft start, this tool is ideal tool to repair, remodel and restore. The MM20 is capable of handling a wide range of applications including cutting in wood, plastic or metal, sanding wooden or painted surfaces, scraping, grout removal and more.

Dremel Multi-Max MM20 is the more powerful oscillating tool for the frequent user.



DREMEL MULTI-MAX
MM20

Dremel® Multi-Max MM40

The Dremel Multi-Max MM40 is the best performing oscillating tool with Quick Lock: quick and keyless accessory change mechanism. Equipped with electronic feedback and soft start this best in class oscillating multitool can comfortably handle a wide range of applications including cutting in wood, plastic or metal, sanding wooden or painted surfaces, scraping, grout removal and more.

The Dremel Multi-Max MM40 is the best in class oscillating tool for the more demanding jobs.



DREMEL MULTI-MAX
MM40

Dremel® Multi-Max

With the new Multi-Max, Dremel brings a superior consumer experience to the cordless oscillating tool category. The ideal tool to repair, remodel and or restore. Its quick change system allow adapting quickly to any situation using the wide variety of accessories, while the 2 batteries ensure enough endurance to tackle any (light) DIY and hobby job. Combined with superb ergonomics, the Dremel Multi-Max is the oscillating tool for quick fixes, smaller restorations projects. There are accessories available for the Multi-Max to cut and sand wood, metal, plastic & drywall, grind cement & mortar and remove grout.

Multi-Max, most comfortable and user friendly oscillating tool.



DREMEL MULTI-MAX
8300

OTHER TOOLS

A

Dremel® TRIO

The new Dremel TRIO is the ultimate tool for everyone involved in general handson projects in and around the house. The Dremel TRIO has a 3 in 1 Spiral System which enables you to cut, sand and rout with 1 and the same tool. This versatile, compact and lightweight tool is very powerful! With its 360° spiral cutting technology and plunge-cut ability, the tool makes quick and freehand cuts in wood, plastic, drywall, metal, and wall tile.

*Dremel TRIO 3 in 1 Spiral System:
Cut, Sand and Rout.*



DREMEL TRIO

Dremel® Engraver

Engrave or decorate a wide variety of materials like metal, plastic, glass, ceramic, wood and leather. Including different templates for easy engraving.

Easy engraving in all sorts of materials.



DREMEL ENGRAVER

Dremel® Glue Gun Series

Dremel Glue Gun 910 and Dremel Glue Gun 940 are high temperature glue guns. Tools are ideal for a variety of creative hobby applications, such as scrapbooking, decorating, colour gluing on glass, etc. Together with the included 7 and 11 mm glitter sticks you can add a sparkle and make beautiful decorations or use it for light DIY jobs around the house, such as gluing ceramics, wood, plastics, glass.

A Dremel Gun for every gluing need:drip-control, high temperature glue guns for precision and light DIY applications

DREMEL GLUE GUN 910



DREMEL GLUE GUN 940

Dremel® VersaTip

The cordless 6 in one gas-torch. The perfect tool for soldering, melting, shrinking, pyrography and hot cutting. The only soldering iron that combines a multitude of applications in one tool, thanks to its ability to use 6 interchangeable tips.

The cordless 6 in 1 gas torch.



DREMEL VERSATIP

OTHER TOOLS

A



Dremel® VersaFlame

The Dremel VersaFlame is the only stationary burner that safely combines open flame use with a catalyst and soldering head. Making it the most versatile stationary burner in the market. Dremel VersaFlame is powered by liquid butane gas for quick heat-up and fast recharge. Ideal for applications such as bending of thin glass objects, soldering of water pipe connections, etc.

Only stationary gas torch with safety protection and fast heat up time.



DREMEL VERSAFLAME

Dremel® Fortiflex

The Dremel Fortiflex is a high quality precision tool, consisting of a powerful hanging motor (300W), a patented heavy duty flexible shaft, an exchangeable precision hand piece and a foot pedal for variable speed control (0-20,000rpm). This makes it the ideal tool for stationary projects, like woodworking, jewellery making, stone working, car restoration, or any project where a combination of power and precision is required.

Power meets precision.



DREMEL FORTIFLEX™

HINTS AND TIPS

Using Mandrel 401:

Screw accessory on to the mandrel firmly.

The accessories should be used with this mandrel are: [414](#) / [422](#) / [429](#) / [425](#)



Using Mandrel 402*:

Loosen screw.

Replace accessory.

Tighten screw. Do not overtighten

The accessories should be used with this mandrel are:

[541](#) / [456](#) / [426](#) / [540](#) / [420](#) / [409](#) / [411](#) / [412](#) / [413](#)



Using MultiChuck:

It accepts accessories from 0,4mm to 3,4mm shank. Dremel MultiChuck uses similar system as a conventional drilller and dismiss the use of any collet. And you can loosen and tighten it using hands



Using collets:

Dremel accessories have different shank sizes, depending on the accessory you might need to use a different collet. Collets sizes are: 3,2mm / 2,4mm / 1,6mm / 0,8mm. Your Multitool comes with a 3.2mm collet



DREMEL EZ
SpeedClic



Using Dremel EZ SpeedClic:

Through a patented mandrel and wheel design, Dremel has found a way that enables you to change your accessory in 3 simple steps: Pull, Click, Twist – Without using any tools.



**Hint: For loosening and tightening screws use bottom of the wrench*



HINTS AND TIPS

Where to buy?

You can find the nearest dealer online: Go to our Dealer locator at www.dremel.com

Warranty:

All Dremel tools have 2 years warranty and all attachments 1 year warranty

Impregnating polishing wheels with polishing compound:

This is a solid compound. Add a few drops of water to the compound and touch the polishing wheel to the compound at a low speed to impregnate it.

Why does the multitool have high speeds?

High speed when coupled with the right accessory is what makes the multitool so useful. The best results generally happen when taking a less aggressive but more frequent pass. Over pressure can damage the accessory and the work piece.

Tool gripping:

One-handed grip: Overhand grip on the tool with fingers curved over the top of the tool and the thumb underneath. Tennis style underhand grip. It is useful for drilling horizontally

Two-Handed grips give extra stability. An underhand-overhand combination gives firm support. This grip is particularly useful for grinding, sanding and polishing.

Pencil grip is used mainly for engraving; polishing detailed applications.



One-Handed grip



Two-handed grip



Pencil grip

Speed guide:

Material		Speed Drilling	Speed Routing	Speed Sawing	Speed Engraving/Grinding	Speed Shaping/Carving
Plastics	Acrylic	Low	Low	Low	Low	Low
	PVS					
	ABS					
Natural Wood	Hardwood	Medium	Medium	Medium	NR*	Medium
	Softwood	High	High	High		High
Man-made Wood	MDF	High	High	High	NR*	High
	Chipboard	Medium	Medium	Medium	NR*	NR*
	Hardboard					NR*
	Plywood					Medium
Metal	Ferrous	Low	Low	Low	Low	Low
	Brass					
	Copper					
	Aluminium					
Other	Ceramics	Low	NR*	NR*	High	High
	Glass					
	Stone					
	Slate					

Speed is part of an operational formula and depends on several variables, including the density of the material; the type of cutter being used; and the depth of cut being applied. These are variables that should be considered with each application, preferably after some trial using waste material.

NR*: Not Recommended

HINTS AND TIPS

Tools x Attachments	Workstation (220)	Flex Shaft (225)	Router Table (231)	Plunge Router (335)	Right Angle Attachment (575)	Multipurpose Cutting Kit (565)	Wall Tile Cutting Kit (566)
Dremel Fortiflex	X	X	X	X	X	X	X
Dremel 8100	●	NA	NA	NA	●	●	●
Dremel 4200	●	●	●	●	●	●	●
Dremel 4000	●	●	Adapt	●	●	●	●
Dremel 398 / 400 Series	●	●	●	●	●	●	●
Dremel Stylus	X	X	X	X	X	X	X
Dremel 7700 7.2V	●	NA	NA	NA	NA	NA	NA
Dremel 300 Series	●	●	Adapt	●	●	●	●
Dremel 8000 10.8V	●	NA	NA	NA	●	●	NA
Dremel 200 Series	●	●	●	●	●	●	●
Dremel 8200 10.8V	●	●	NA	NA	●	●	●
Dremel 3000	●	●	Adapt	●	●	●	●

Tools x Attachments	Grout Removal Kit (568)	Mini Saw (670)	Line Circle Cutter (678)	Chainsaw Sharpener (1453)	Flex Shaft Tool Holder (2222)	Multi-Vise (2500)
Dremel Fortiflex	X	X	X	X	●	X
Dremel 8100	●	X	●	●	X	●
Dremel 4200	●	●	●	●	●	●
Dremel 4000	●	●	●	●	●	●
Dremel 398 / 400 Series	●	●	●	●	●	●
Dremel Stylus	X	X	X	X	X	X
Dremel 7700 7.2V	NA	NA	NA	●	X	X
Dremel 300 Series	●	●	●	●	●	●
Dremel 8000 10.8V	●	NA	●	●	●	●
Dremel 200 Series	●	●	●	●	●	X
Dremel 8200 10.8V	●	●	●	●	●	●
Dremel 3000	●	●	●	●	●	●

- Possible Combination
- X Combination not possible
- Adapt If you are facing problems to fit your tool to the attachment 231 you need an adaptor. Request it through your local hotline free of charge.
- NA The combination of tool and attachment is possible but not advised.



The Hobby line was created with the creative hobbyist in mind; whether your interests lie in paper crafts, jewellery making, home décor or any other craft projects you will find a tool to fit your needs.

Our tools are created to be especially versatile and each tool can be used for more than one application, some of the tools have over 100 accessories to choose from making it possible to decorate almost everything.



The growing Hobby range includes: ————



DREMEL VERSATIP

The VersaTip is the only heat tool that combines a magnitude of applications in to one tool. It is the perfect tool for heat embossing, wood burning, hot fixing, quick drying and lots more!

It is cordless, comes with 6 interchangeable tips and has a variable temperature setting for maximum flexibility.



DREMEL 7700

The Dremel 7700 is an easy to use cordless 7.2V NiCad multitool, that can be used for all creative hobby jobs, such as engraving, drilling, sanding and polishing of all kinds of materials from wood to glass.

HOBBY LINE



DREMEL GLUE GUN 920

The Dremel 920 is a low-temperature glue gun with a drip-controlled precision tip. Because of its lower operating temperature, compact size and good ergonomics (T-handle, stable base, extendable stand) it is ideal for a variety of creative hobby applications, such as scrapbooking, decorating, colour gluing on glass, etc.

DREMEL GLUE GUN 930

The Dremel 930 is a dual-temperature glue gun with a drip-controlled precision tip. Because of its dual temperature setting it is ideal for a variety of creative hobby applications, such as scrapbooking, decorating, colour gluing on glass, etc. as well as for light DIY jobs around the house, such as gluing ceramics, wood, plastics, glass, etc.



DREMEL ENGRAVER

The ergonomic, light weight Engraver handles all of your engraving projects with ease and maximum precision.

Use the Engraver to create designs in to glass, wood, plastic and more. The Engraver is also great for naming your valuables.

The kit also includes 4 engraving templates and a diamond engraving tip allowing you to engrave special shapes into any material.



DREMEL 3000

The 3000 is a great tool for home décor. It has a lot of power, speed and is comfortable to handle.

Use the Dremel Accessories for projects like engraving pots, customizing furniture, jewellery making and woodworking.

Dremel tools are smart, light to use and extremely versatile! They can be used for a wide variety of applications such as engraving, gluing, embossing and wood burning. Dremel products can be used in all steps of your projects, from beginning till end.

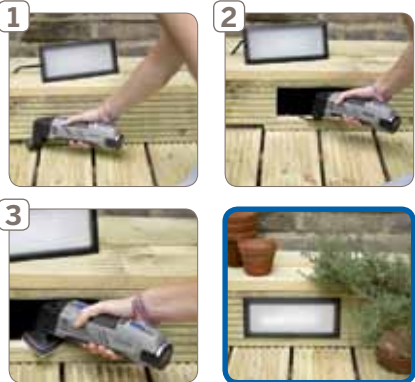


PROJECTS - OUTDOOR

Insetting lighting into your garden decking **1**

What you need:

A tools	B accessories	C attachments
Dremel® Multi-Max	<ul style="list-style-type: none"> ● MM450, ● MM411, ● MM14, ● MM70W 	-
Extra		
Planks of decking	Nails	LED lights



Steps

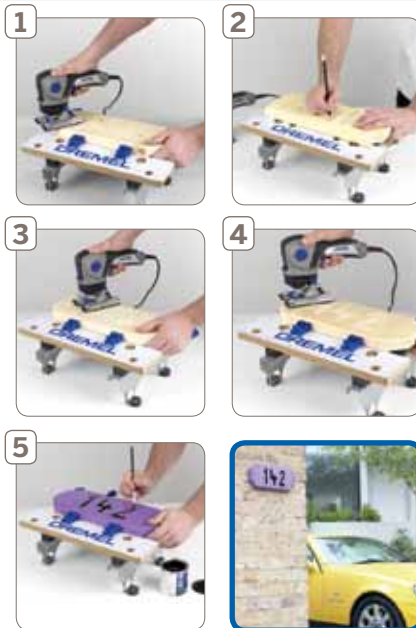
- 1) Perform lateral plunge cut using the Dremel Multi-Max with the wood and drywall saw blade MM450 to the base of the upright section of the decking to hide wiring.
- 2) Plunge cut the holes for the outdoor lights into the same section of decking using the Multi-Max flush cut blade MM422.
- 3) Sand the edges of the plunge cut holes as required using the sanding plate MM14 and sanding sheet/s MM70W.
- 4) Add herbs in pots or roses in terracotta planters onto your deck space to soften the look. Don't forget to water, terracotta dries out quickly and changes according to the seasons. If your deck is very sunny, go for geraniums or small alpins in pots as they need less water.

PROJECTS - OUTDOOR

Etch a lettered house sign

What you need:

A tools	C attachments	
New Dremel TRIO	Multipurpose carbide cutting bit (TR563) Corner rounding router bit (TR615) Straight routing bit (TR654) Sanding mandrel, sanding band (TR407) grit 60 and (TR 432) grit 120	
Extra		
Workbench clamping system	Piece of fine sandpaper	Two screws, plus plug
Artist's paintbrush	Paint: primer, undercoat, top coat, contrasting colour for letters/numbers	



Steps

- 1) First, cut off a piece of wood by using the Dremel TRIO and the multipurpose cutting bit (TR563). Then, smooth and shape any end grain using the Dremel TRIO with the sanding band (TR407). Next, add a decorative bevelled edge, again using your Dremel TRIO but this time, with the corner rounding router bit (TR615).
- 2) Then place your design of house number or name on the piece of wood.
- 3) Start to rout out the numbers or name inside your pencil marks using the Dremel TRIO and its straight routing bit (TR654).
- 4) Drill one hole on the left and right of the plaque in order to affix it to the wall with the Dremel TRIO and multipurpose carbide cutting bit (TR563).
- 5) Paint your street address sign in the contrasting colours that you want or put a varnish over it.

Renovating mosaic garden table

What you need:

A tools	B accessories	C attachments
Dremel 3000 Series	● 569	Dremel wall and floor grout removal kit (568)
Extra		
Grouting Filler	Sponge	Clean dry cloth



Steps

- 1) Attach the Dremel 3000 Series to the Dremel 568 Wall and Floor Grout Removal Kit that has an attachment that cleverly removes grout between wall and floor tile. Start to clean the grout between the mosaic pieces.
- 2) Continue to do this until the dirty grout has been removed. Then commence the re-grouting process using a grouting filler.
- 3) Wipe with sponge to remove excess grout from the surface of the mosaic table. Leave to dry and polish off the surface and buff to shine.

PROJECTS - OUTDOOR

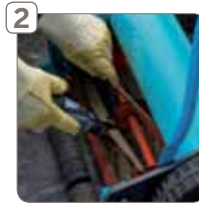
Sharpen lawnmower blades

What you need:

A tools	B accessories	C attachments
Dremel 3000 Series	● 8175	Dremel lawn mower sharpener (675)

Steps

- 1) Attach the Dremel 675 Lawnmower Sharpening Attachment to your Dremel 3000 Series.
- 2) Then either carefully remove the lawnmower blades and run the Dremel 675 Lawnmower Sharpening Attachment along each – or leave blades in lawnmower, make sure it's unplugged and lock it off so that the blades cannot turn and run the sharpening attachment along each one taking care not to cut yourself. The act of sharpening the blades may create sparks, so make sure that you wear gloves and safety goggles.



Double seat for your balcony

What you need:

A tools	B accessories	C attachments
Dremel® DSM20	● DSM500 Multi-Purpose Cut-Off Wheel	DSM Edge Guide DSM840 Cutting Guide
Dremel 3000	● SC411	
Dremel Glue Gun	7mm Wood Glue Sticks GG03	

Other materials required:

Manual or powered screddriver	Self countersinking screws	Scaffolding board
-------------------------------	----------------------------	-------------------

Steps

- 1) Cut all scaffolding boards using Dremel DSM20 compact saw and Dremel DSM500 Multi-Purpose Cut-Off Wheel. Then, set to a cutting depth of 20mm and cut along the marked up line on one side. You will have to cut through the timber from both sides so make sure that your marking up is accurate for both sides of the cut.
- 2) Lay out three scaffolding boards side by side and fix the foot onto the base. Screw the left armrest onto the top of the side panel. Then, screw the seat supports onto the inside aspect of the left hand side panel at 36cms from the bottom, making sure it's flush to the back edge of the side panel.
- 3) Fix the front support in line with the end of the seat support at 90 degrees, as shown. Construct the right hand side, mirroring what you've done on the left. Then screw the front panel to the front support of the left and right sides and all the seat panels onto the seat support.
- 4) Take your back rest panels, lay them out on the floor, butt them up tightly to make sure they are flush with each other and screw to fix the back rest supports at each end flush with the cut and flush with the top. Screw the top piece for the back along the top edge of the back rest. Now take the assembled back rest and screw to the sides at the desired angle. Fill the screw holes with filler of a matching colour and sand off excess, plus any rough edges to finish using your Dremel 3000. Treat with exterior wood treatment / stain.



PROJECTS - INDOOR

Fitting Laminate Flooring

What you need:

A tools

Dremel DSM20
Compact Saw

Extra

Laminate flooring

B accessories

● DSM600
● DSM500

Underlay 3-4mm
deep

C attachments

Cutting guide
(DSM840)

Tape measure and
pencil

Steps

- 1) Measure up the dimensions of your floor and calculate the square meters of underlay and laminate that you will need, adding 10% extra for wastage.
- 2) Lay your underlay. Trim to fit. Lay lengths side by side and secure them with masking tape.
- 3) Prepare to lay the first board into the left-hand corner of the room. Turn the board over to protect it from being scratched and using it as a height guide, perform a flush cut into the base of the skirting boards with your Dremel DSM20 and the Dremel DSM600 Multi-Purpose Flush Cut Carbide Wheel. Then, turn your laminate board back over and keep the end of the laminate with the short tongue facing towards the wall and tuck the laminate board into the cavity.
- 4) Continue to cut into the skirting board as you lay the laminate from left to right across your room, cutting the last laminate board with your Dremel DSM20 with the DSM840 cutting guide and the Dremel DSM500 Multi-Purpose Carbide Wheel to size.
- 5) Continue to lay your laminate boards left to right until the floor is laid. Fixing them under the skirting boards will keep them perfectly in place without the need to use flooring trims.



Wardrobe Upcycling Project

What you need:

A tools

Dremel 8100
Dremel DSM20

Extra

5 wooden coat
hangers
Board (50 cm x 10
cm x 2 cm)

B accessories

● Wood drill bit set 636
● Engraving cutters
● DSM500

Tracing paper
Screwdriver
Hard oil, wax, paint
or varnish

10 40-mm
wood screws
Paper, pencil, ruler

Steps

- 1) Trace the outlines of a coat hanger on paper and mark where half of the hanger is sawn off. Using your paper pattern you can now transfer the sawing line to your five coat hangers.
- 2) Cut the hangers to the right length using the Dremel DSM20 and multipurpose carbide cutting wheel. Mark on the board where you are going to drill holes to fix the coat hangers. To hold the hangers you need a length of wood is needed - 10 cm wide and 2 cm thick. Cut it to a length of 50 cm.
- 3) Mark on the board where you are going to drill holes to fix the coat hangers. Centred from the edge, make two hole marks each at 5 cm + 10 cm + 10 cm + 10 cm + 10 cm. Drill these using the Dremel 8100's and 4-mm wood drill bits 636.
- 4) Between the holes transfer the floral patterns from your template, using pencil and tracing paper. Or create your own designs! Trace the designs using the Dremel 8100 and engraving cutter 106. Finish the board with a coat of, for example, hard oil. Screw the shortened coat hangers through the holes in the board and the eye catcher for your hall is complete.



Organic Waste Bin

What you need:

A tools	B accessories	C attachments
Dremel 4200	<ul style="list-style-type: none"> ● 561 Multipurpose spiral cutting bits ● SC407 EZ Speed clic sanding mandrel & sanding bands 	Circle cutter attachment 678
Extra		
Existing kitchen worktop	Saucepan, maximum diameter 30cm	Pencil



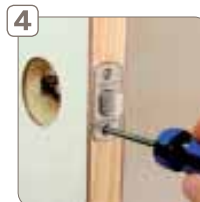
Steps

- 1) Take your saucepan and pencil, draw around the saucepan on chosen worktop to mark out the wastebin.
- 2) Set the circle cutter attachment to half the saucepan's outside diameter with the Dremel 4200 and the circle cutter attachment 678 and spiral cutting bit 561.
- 3) Sand down the edges with the EZ SpeedClic sanding mandrel and sanding bands SC407. Fit the saucepan into the worktop, place lid in position. Job done.

Mortising a door latch

What you need:

A tools	B accessories	C attachments
Dremel 3000 Series	● 650	Dremel plunge router attachment (335)



Steps

- 1) Slide the door latch into the latch hole and trace the outline of the faceplate onto the edge of the door with pencil. Remove the door latch.
- 2) Fit a Dremel multitool with the 650 router bit and 335 plunge router attachment. Set the depth of cut on the plunge router attachment to match the thickness of the faceplate. Test cutting depth on a scrap piece of wood. The depth of cut should allow the faceplate to align flush with the edge of the door.
- 3) Using the Dremel router attachment, remove the wood between pencil lines drawn on the door's edge to create a mortise for the faceplate. Fit the latch and faceplate into the door. Use a bevel edge chisel and hammer to square the corners of the mortise if faceplate has square corners.
- 4) Mark holes for the faceplate and drill with a bit smaller than fastening screws. Screw the faceplate in place and continue with lockset installation.

PROJECTS - INDOOR

Restoring an old wooden cabinet

What you need:

A tools

New Dremel 8200

Extra

Sanding block

B accessories

- SC402
- 471S, 472S, 473S
- 511S, 512S
- 520
- 423S

Beeswax

Steps

- 1) First, using sanding block, sand down the entire cabinet.
- 2) Then sand away any old pieces of damaged and scratched wood using the Dremel 8200, EZ SpeedClic mandrel (SC402) and the EZ SpeedClic Abrasive Buffs in Coarse, Medium and Fine (511S and 512S). Alternatively, use the new EZ SpeedClic detailed abrasive brushes for delicate shapes (471S, 472S and 473S). If you need to execute precise sanding, and sanding at a 45 degree and 90 degree angle, then the new Dremel Shaping Platform will help you to do this.
- 3) Then, work in a number of layers of beeswax to the natural wood for a beautiful finish.
- 4) On detailed areas polish using the Dremel 8200, EZ SpeedClic mandrel (SC402) and the EZ SpeedClic polishing cloth wheel (423S).
- 5) Remove the brass handles and remove the damage to the surface and polish up using the Dremel 8200, EZ SpeedClic Mandrel and the Impregnated Polishing Wheel (520).



Installing recessed shelves for wine glasses

What you need:

A tools

Dremel 3000 Series

Extra

Standard wood screws and rawlplugs

B accessories

● 150

C attachments

Dremel right angle attachment (575)

Shelving material



Steps

- 1) Measure the recess and mark up your shelving in the recess.
- 2) Create a frame from your shelving material to fit the space and affix to the masonry wall.
- 3) Then cut shelves to fit and using the Dremel 3000 Series with right angle attachment and drill bit, drill holes for the shelf supports.
- 4) Insert shelves.

Renovate a mirror with Dremel

What you need:

A tools	B accessories	C attachments
Dremel 3000 Series	● SC511	-
Extra		
Masking tape		Scissors



Steps

- 1) Mask off the mirror area close to the frame with masking tape. Prepare to sand off water-damaged area of frame.
- 2) Sand off stained and damaged area using Dremel 3000 Series and EZ SpeedClic Abrasive Buffs (coarse). Finish sanding off the rest of the frame.
- 3) Paint with light coloured emulsion or paint wash allowing some of the wood grain to show through – or if you prefer, paint and then sand to obtain a driftwood technique. If you wish, add a clear glaze or water-based varnish to seal in finish to desired look.

Cut laminate floor around a pipe

What you need:

A tools	B accessories	C attachments
Dremel 3000 Series	● 561	Dremel multipurpose cutting kit (565)
Extra		
Wood laminate		



Steps

- 1) First take your wood laminate, measure the hole for the radiator pipe.
- 2) Take your Dremel 3000 Series and together with the Dremel multipurpose cutting kit attachment cut around the radiator pipe. Then cut two slots either side of the hole retaining the piece of laminate to replace when the laminate is in beneath the radiator. Replace wood piece.

PROJECTS - CRAFTS & GIFTS

Black, Silver, White and Gold Christmas Window

What you need:

A tools

Dremel Hobby 7700
Gluegun 930

C attachments

Diamond Wheel Point 7103
Clear glue 7 mm

Extra

Glass discs	Mirror discs of different sizes	Glass droppers / icicles
Flexible beading needle	Snowflake templates	Selection of narrow organza and satin ribbon in black, gold and silver



Steps

- Using the Dremel Hobby 7700 fitted with the 7103 diamond wheel point, engrave the snowflake motif onto a glass disc and lay it on a dark piece of paper so that the engraving shows up clearly.
- Engrave the snowflakes onto the mirror discs using the Dremel Hobby 7700 fitted with the 7103 diamond wheel point.
- Use your Dremel Hobby 7700 with 7103 Diamond wheel point to engrave spirals and stripes onto glass dropper decorations.
- Loop fine ribbon through the hole of a glass disc or glass dropper, then thread on a few beads, sandwiched between rondelles (these are a specific type of bead).

Glass candle holder

What you need:

A tools

Dremel Engraver 290

B accessories

● 9924

C attachments

-

Extra

Glass (preferably coloured or frosted)	Tracing paper	Black felt
--	---------------	------------



Steps

- First of all, we suggest using a coloured or frosted glass. Draw a simple design on paper. We've chosen butterflies but a leaf or flower design would work just as well. Place the design inside the glass and hold in place with some black felt. You should be able to see the design clearly through the glass.
- Now set the Dremel Engraver on speed 1. Hold the tool at a slight angle as if you're working with a pencil and engrave the glass along the outline of your design. There's no need to apply pressure, just position the tip accurately on the glass and move steadily along the outline. When complete, remove the paper and place the felt back inside the glass. This will help you see any gaps in the outline.
- Fill in the design by engraving with parallel lines positioned as closely together as possible. Work patiently in this way until the whole design is covered and then use a burnishing head to smooth the engraving to a neat and professional finish.

PROJECTS - CRAFTS & GIFTS

Cards, tags and giftwrap

What you need:

A tools	B accessories
Dremel VersaTip	
Dremel Glue Gun 930	-

Extra

Card blanks and envelopes	Decorative printed and glitter paper	Metallic spray paints
Low-tack spray adhesive	Embossing pen	Embossing powders
Ribbon in various widths	Star sequins and gems	Sheets of Mylar

Steps

- 1) Lay a star paper sheet of Mylar or acetate over the templates and trace round them using a permanent marker pen. Cut carefully along the lines drawn using the VersaTip fitted with the hot cutting knife.
- 2) Spray one side of the Mylar with a light misting of spray adhesive, followed by pressing it down gently on the card itself. Apply the spray paint.
- 3) Place a smaller star stencil over the sprayed motif and use the embossing pen to draw around and fill in the shape to apply a layer of embossing fluid. Sprinkle embossing powder onto the motif and remove excess powder. Use the VersaTip with hot blower head to melt and fuse the powder (cool setting).
- 4) Cut decorative paper to cover the lower half of the card face and glue it in place. Embellish the card with ribbons as seen. Finish by using the Dremel Gluegun 930 to glue a star sequin and gem in the centre of the star motif.



Snake Jigsaw

What you need:

A tools	B accessories	C attachments
Dremel Moto-Saw	● MS51, MS52	-
Dremel 3000	● SC407, SC411	

Extra

Gaffer tape	Scrap wood	9mm MDF
Two pencils	7,5 cm w x 10 cm l	55 cm x 50 cm

Steps

- 1) Make a 'drawing guide'. This will allow you to draw two parallel lines in the shape of the snake's body within the 50 cms circle. To make the drawing guide, cut a piece of scrap wood 7.5 cms wide by 10 cms long using your Dremel® Moto-Saw. Then, tape a pencil to each edge and draw the coiled body of the snake inside the circle. Create the head and tail by drawing them freehand.
- 2) Measure the length of your snake's body, excluding the head and tail, using a dressmakers tape and divide it into 26 equal size parts. Then, draw the interlocking jigsaw outlines on each piece to act as a guide. Cut out the snake using your Dremel Moto-Saw and the coarse wood blade MS51 by cutting along the lines you have drawn on both sides of the body and around the head and tail.
- 3) Now cut out the segments of the snake, following your drawn lines including the interlocking jigsaw pieces, using your Dremel Moto-Saw and the fine wood blade MS52.
- 4) Gently sand off any rough edges using the Dremel 3000 with EZ SpeedClic Sanding Discs SC411 on the edges of the snake only. Do not sand the interlocking jigsaw pieces, as this will cause the pieces to fit together poorly.
- 5) Paint on one number per segment and decorate in child-friendly colors creating your own design, including pictures, to encourage engagement.



PROJECTS - CRAFTS & GIFTS

Decorated Rubber Boot Christmas Stockings

What you need:

A tools		C attachments	
Dremel Glue Gun 930	Clear glue sticks, silver glitter glue sticks 7mm		
Dremel VersaTip Extra	Hot blower head		
Fur fabric	Fabric stars	Hot fix stones	
Pair of unwanted trousers in coordinating colour	Beaded fringing	Braid	

Patterned rubber boots – or plain in bright colours



Steps

- 1) Cut of a piece of jeans which should cover the top part of the boot. Use the Gluegun to glue it onto the boot
- 2) Apply a line of clear glue around the top edge of the boot using the Dremel Gluegun 930 and stick a 7cm wide strip of fur fabric around the boot.
- 3) Fit the Dremel Gluegun 930 with a silver glitter glue stick and run decorative lines of glue around the boot on either side of the braid
- 4) Use the Dremel VersaTip with hot blower head, set to its lowest heat setting, to apply hot-fix stones on the outer side of each cuff.

Christmas in Style

What you need:

A tools	B accessories	C attachments
Dremel 4200	● SC544 EZ SpeedClic wood cutting wheel	Wood drill bit set 636
Dremel Glue Gun 930 and glue sticks GG02 Extra	● SC402 EZ SpeedClic mandrel	
Binding wire	Medium-density fibreboard 3mm thick	Paint spray can
About 50 small Christmas balls	White touch-up stick	White branches
Set square	Ribbon	Pencil



Steps

- 1) Bind branches together into an attractive wreath and fix them together with wire at regular intervals. Either use white branches or spray your branches white before hand.
- 2) Draw a star on a sheet of wood using a set square and a pencil. Then use the Dremel 4200 with the EZ SpeedClic wood-cutting wheel SC544 to cut out the triangle. Change the wheel to the 6mm wood drill bit and drill a hole between two sharp points of the star. Finally spray paint the star.
- 3) Use your Dremel Glue gun and gluesticks to add the final decorative highlights to your wreath by gluing mini Christmas tree balls to it on regular intervals. Then attach ribbon to the star through the hole and glue onto the wreath, could also add a Christmas message to the star if wanted. Once the hot glue has dried then hang up the wreath with the star. Job done.

PROJECTS - CRAFTS & GIFTS

Wooden bead earrings

What you need:

A tools	B accessories	C attachments
Dremel VersaTip 2000	● 7134	Dremel Clamps (2500)
Dremel Multitool		
Extra		
Plain wooden beads in different shapes and sizes		Silver jewellery wire
Earring fixings (two for each pair of earrings)		Scissors



Steps

- Using the VersaTip, draw straight lines and dots onto plain wooden beads. Practise on spare beads, trying different patterns and designs.
- To decorate the painted beads, hold the bead in the Dremel clamp, then use the Dremel Multitool and diamond Engraver point and gently press the tip onto the bead to make small spots.
- Cut a length of wire about 30 cm (12") long and fold it in half. Thread this through the beads and twist around the earring fixings securely and trim the ends neatly.

Easter Vase Project

What you need:

A tools	B accessories
Dremel 8100	● SC407 ● SC544
Extra	
Coconut	White Acrylic Paint
Pencil	Wooden Ring (approx. 5cm diameter)
Knife	



Steps

- Sand down the surface of the coconut with the sanding band SC407.
- Draw a zig-zag pattern around the upper end of the coconut with a pencil. Use the SC544 cutting wheel to cut along the line. (The fruit of the coconut can then be removed with a knife by running it along the edge of the coconut).
- Apply white acrylic paint to the outside and inside of the coconut shell.
- A simple wooden ring (also painted white) will keep the vase standing upright. Add water and flowers and your vase is ready for display.

INDEX BY NUMBERS

Product	Pack	Ordernumber
Tools:		
200 Series	200 Series 200-5	F0130200JA
290/Engraver	290/Engraver Hobby	F0130290JJ
	290/Engraver	F0130290JM
3000	3000 - 1/25	F0133000JA
	3000 - 15	F0133000JA
910 Glue Gun	910 Glue Gun High Temp	F0130910JA
920 Hobby Glue Gun	920 Hobby Glue Gun Low Temp	F0130920JA
930 Hobby Glue Gun	930 Hobby Glue Gun Dual Temp	F0130930JA
940 Glue Gun	940 Large Glue Gun High Temp	F0130940JA
2000/VersaTip	2000/VersaTip	F0132000JA
	2000/VersaTip Hobby	F0132000KA
2200/VersaFlame	2200/VersaFlame	F0132200JA
4000	4000 - 1/45	F0134000JA
	4000 - 4/65	F0134000JD
4200	4200 - 4/75	F0134200JA
6800/TRIO	6800-2/9 TRIO	F0136800JA
7700	7700 7700-30	F0137700JA
	7700 Hobby	F0137700JD
8100	8100 - 1/15	F0138100JA
8200	8200 1/35	F0138200JA
	8200 2/45	F0138200JD
8300 Multi-Max	8300 Multi-Max	F0138300JA
9100 Fortiflex	9100 Fortiflex	F0139100JA
Multi-Max MM20	MM20 - 1/9	F013MM20JA
Multi-Max MM40	MM40 - 1/9	F013MM40JA
MS20/Moto-Saw	MS20 - 1/5	F013MS20JA
DSM20	DSM20 - 3/4	F013SM20JB
Attachments:		
Dremel Clamps 12 Pack	Dremel Clamps 12 Pack	261500005I
Workstation (220)	Workstation	26150220JB
Flexible Shaft (225)	Flexible Shaft	26150225PD
	Flexible Shaft (New)	26150225JA
Flex-Shaft Tool Holder (2222)	Flex-Shaft Tool Holder	261522223Z
Shaper / Router Table (231)	Shaper / Router Table	261502313Z
Plunge Router Attachment (335)	Plunge Router Attachment	26150335JA
Multipurpose Cutting Kit (565)	Multipurpose Cutting Kit	261505653A

Product	Pack	Ordernumber
Wall Tile Cutting Kit (566)	Wall Tile Cutting Kit	261505663A
Wall & Floor Grout Removal Kit (568)	Wall & Floor Grout Removal Kit	261505683Z
	Grout Removal Attachment	2615056870
Shaping Platform	Shaping Platform	26150576JA
Detailer's Grip	Detailer's Grip	26150577JA
Mini Saw Attachment (670)	Mini Saw Attachment	26150670JA
Line & Circle Cutter Attachment (678)	Line & Circle Cutter Attachment	26150678JA
Chainsaw Sharpening Att. (1453)	Chainsaw Sharpening Attachment	26151453PA
Multi-Vise (2500)	Multi-Vise	26152500JA
Bar Clamps (505)	Set Of Bar Clamps	26152505JA
Ratchet Clamps (515)	Set Of Ratchet Clamps	26152515JA
Ratchet Clamp (520)	Acc. Ratchet Clamp	26152520JA
Project Table (2600)	Project Table	26152600JA
	Project Table Hobby	26152600KA
Fortiflex Hand Piece (910)	Fortiflex Hand Piece Small	2615910100
	Fortiflex Hand Piece Large	2615910200
Glue Pad (GG40)	Glue Pad 20mm x 20mm	2615GG40JA
Universal Adapter (MM300)	Universal Adapter	2615M300JA
Multi-Flex (MM720)	Multi-Flex	2615M720JA
Cutting Depth Guide (MM810)	Cutting Depth Guide	2615M810JA

Accessories:

Small Engraving Cutter (105)	Small Engraving Cutter Multi Pack	26150105JA
Small Engraving Cutter (106)	Small Engraving Cutter Multi Pack	26150106JA
Small Engraving Cutter (107)	Small Engraving Cutter Multi Pack	26150107JA
Small Engraving Cutter (108)	Small Engraving Cutter Multi Pack	26150108JA
Small Engraving Cutter (110)	Small Engraving Cutter Multi Pack	26150110JA
Small Engraving Cutter (111)	Small Engraving Cutter Multi Pack	26150111JA
Small Engraving Cutter (113)	Small Engraving Cutter Multi Pack	26150113JA
High Speed Cutter (114)	High Speed Cutter Multi Pack	26150114JA
High Speed Cutter (115)	High Speed Cutter Multi Pack	26150115JA
High Speed Cutter (117)	High Speed Cutter Multi Pack	26150117JA
High Speed Cutter (118)	High Speed Cutter Multi Pack	26150118JA
High Speed Cutter (125)	High Speed Cutter Multi Pack	26150125JA
High Speed Cutter (134)	High Speed Cutter Multi Pack	26150134JA

INDEX BY NUMBERS

Product	Pack	Ordernumber	Product	Pack	Ordernumber
High Speed Cutter (144)	High Speed Cutter Multi Pack	26150144JA	Flap Wheel (502)	Flap Wheel Single Pack	2615050232
High Speed Cutter (192)	High Speed Cutter Multi Pack	26150192JA	Flap Wheel (504)	Flap Wheel Single Pack	2615050432
High Speed Cutter (193)	High Speed Cutter Multi Pack	26150193JA	Abrasive Point (516)	Abrasive Point - Bullet Shaped	2615051632
High Speed Cutter (194)	High Speed Cutter Multi Pack	26150194JA	Impregnated Polishing Wheel (520)	Impregnated Polishing Wheel Single Pack	2615052065
High Speed Cutter (196)	High Speed Cutter Multi Pack	26150196JA	Wheel Shape Stainless Steel Brush (530)	Stainless Steel Brush Single Pack	2615053032
High Speed Cutter (199)	High Speed Cutter Multi Pack	26150199JA	Cup Shape Stainless Steel Brush (531)	Cup Shape Stainless Steel Brush Single Pack	2615053132
VersaTip Soldering Tips (201)	VersaTip Soldering Tips Multi Pack	26150201JA	End Shape Stainless Steel Brush (532)	End Shape Stainless Steel Brush Multi Pack	26150532JA
VersaTip Cutting Knife (202)	VersaTip Cutting Knife Multi Pack	26150202JA	Wheel Shape Brass Brush (535)	Wheel Shape Brass Brush Single Pack	2615053532
VersaTip Woodburning Knife (203)	VersaTip Woodburning Knife Multi Pack	26150203JA	Cup Shape Brass Brush (536)	Cup Shape Brass Brush Single Pack	2615053632
Mandrel (401)	Mandrel Multi Pack	26150401JA	End Shape Brass Brush (537)	End Shape Brass Brush Multi Pack	26150537JA
Wheel Shape Bristle Brush (403)	Wheel Shape Bristle Brush Single Pack	2615040332	High Performance Abrasive Brush (538)	Abrasive Brush Single Pack	26150538JA
Cup Shape Bristle Brush (404)	Cup Shape Bristle Brush Single Pack	2615040432	Cut-Off Wheel (540)	Cut-Off Wheel Multi Pack	2615054032
End Shape Bristle Brush (405)	End Shape Bristle Brush Multi Pack	26150405JA	Cutting / Shaping Wheel (542)	Cutting / Shaping Wheel Single Pack	2615054265
Sanding Band Mandrel 13mm (407)	Sanding Band Mandrel 13mm Single Pack	2615040732	Rip / Cross Cut Blade Minisaw (546)	Rip / Cross Cut Blade Minisaw Multi Pack	26150546JB
Sanding Band Mandrel 13mm (408)	Sanding Band 13mm Grit 60 Multi Pack	2615040732	Multipurpose Cutting Bit (561)	Multipurpose Cutting Bit Multi Pack	26150561JA
H.D. Emery Cut-Off Wheel (409)	H.D. Emery Cut-Off Wheel Multi Pack (36pcs)	2615040932	Tile Cutting Bit (562)	Tile Cutting Bit Single Pack	2615056232
Felt Wheel (414)	Felt Wheel Multi Pack	2615041432	Grout Removal Bit (569)	Grout Removal Bit Single Pack	2615056932
H.D. Emery Cut-Off Wheel (420)	H.D. Emery Cut-Off Wheel Multi Pack (20pcs)	2615042032	Grout Removal Bit (570)	Grout Removal Bit Single Pack	2615057032
Polishing Compound (421)	Polishing Compound Single Pack	2615042132	Router Bit (612)	Router Bit Single Pack	2615061232
Felt Tip (422)	Felt Wheel Multi Pack	26150422JA	Router Bit (615)	Router Bit Single Pack	2615061532
Emery Imp Wheel (425)	Emery Imp Wheel Multi Pack	26150425JA	Drill Bit Set 7pcs HSS (628)	Drill Bit Set 7pcs HSS	2615062832
Fiberglass Reinforced Cut-Off Wheel (426)	Reinforced Cut-Off Wheel Multi Pack	2615042632	Drill Bit Set 4pcs Wood (636)	Drill Bit Set 4pcs Wood	26150636JA
Wheel Shape Carbon Steel Brush (428)	Carbon Steel Brush Single Pack	2615042832	Router Bit (640)	Router Bit Single Pack	2615064032
Felt Wheel (429)	Felt Wheel Multi Pack	26150429JA	Router Bit (650)	Router Bit Single Pack	2615065032
Sanding Band Mandrel 6.4mm (430)	Sanding Band Mandrel 6.4mm Multi Pack	26150430JA	Router Bit (652)	Router Bit Single Pack	2615065232
Sanding Band Mandrel 6.4mm (432)	Sanding Band 13mm Grit 120 Multi Pack	26150430JA	Router Bit (654)	Router Bit Single Pack	2615065432
Sanding Band Mandrel 6.4mm (438)	Sanding Band 6.4mm Grit 120 Multi Pack	26150430JA	Router Bit (655)	Router Bit Single Pack	2615065532
Cup Shape Carbon Steel Brush (442)	Cup Shape Carbon Steel Brush Single Pack	2615044232	Glass Drilling Bit (662)	Glass Drilling Bit 3.2mm Single Pack	26150662JA
End Shape Carbon Steel Brush (443)	End Shape Carbon Steel Brush Multi Pack	26150443JA	Glass Drilling Bit (663)	Glass Drilling Bit 6.4mm Single Pack	26150663JA
Chainsaw Sharpening Grinding (453)	Chainsaw Grinding Wheels Multi Pack (3pcs)	26150453JA	Cleaning/Polishing Set (684)	Cleaning/Polishing Set	26150684JA
Chainsaw Sharpening Grinding (454)	Chainsaw Grinding Wheels Multi Pack (3pcs)	26150454JA	Multipurpose Set (687)	Multipurpose Set	26150687JA
Chainsaw Sharpening Grinding (455)	Chainsaw Grinding Wheels Multi Pack (3pcs)	26150455JA	Cutting Set (688)	Multipurpose Set	26150688JA
Chainsaw Sharpening Grinding (457)	Chainsaw Grinding Wheels Multi Pack (3pcs)	26150457JA	100-pcs Multipurpose Accessory Set (720)	100-pcs Multipurpose Accessory Set	26150720JA
Rubber Polishing Point (462)	Rubber Polishing Point Multi Pack	26150462JA	135-pcs Multipurpose Accessory Set (721)	130-pcs Multipurpose Accessory Set	26150721JA

